

VENUE INFORMATION

TICKETING

We have NO daytime walk-in box office.

Online: www.electricballroom.co.uk

Tickets will be sold through our ABC account and all tickets are scannable on entry.

The venue requires a minimum of a 25% allocation of the saleable capacity.

AGE RESTRICTIONS

14+ but all under 16s must be accompanied by an adult and may be asked to show photo ID.

FACILITIES

Production Office

Location: On the first floor shared with main office.

Wireless internet available.

No outside line available in dressing rooms.

Dressing Rooms

Location: Off stage left on the ground floor.

There are 4 dressing rooms over 2 floors. Each floor has its own shower room and toilet.

Special Effects

Smoke & haze may be used freely. Pyrotechnics are not permitted. Lasers may only be used by prior arrangement a minimum of 4 working weeks prior to the performance date(s). We will require both method statement and risk assessments for our records. All operators must be deemed competent. We will have to consult Camden Council for consent (for the above).

Crowd Management Supplier

In-House

Crew

Provided by promoter

If you wish to use another supplier, you must inform us and ensure that the supplier is a recognised and reputable company with the correct insurances, training and appropriate PPE.

FOS Barrier

In-house, 'Mojo' style.

Towels

Are available, they are charged for as detailed in the rate card.

VENUE INFORMATION

LOAD IN

Not before 12pm.

If you require access before 12pm please contact us in advance to arrange this. This may incur an extra charge.

Load-in is street level, backstage left.

	Metres / Feet
Width:	1.52m / 5'
Height:	2.13m / 7'

STAGE

Stage dimensions / Staging:

	Metres / Feet
Depth:	6m / 18'
Width:	10m / 33'
Width between truss:	6m / 19'
Height:	3m / 9.5'
Clearance to Truss	2.6m / 8.5'

An additional 2x 8'x4' Litedeck are available for use as risers.

FOH Mix Position:

	Metres / Feet
Distance from Stage:	15m / 45'

FLYING / RIGGING

There are no flying facilities. Various 48mm pipes are available.

PARKING FACILITIES

We have space for 2 buses with trailers on Kentish Town Road but at your own risk. Space for runner and production vehicles (2 x splitter vans) during the day until doors, then must move to Kentish Town Road.

Parking of buses on the street will incur a parking ticket.

If you have any last-minute requests please let us know ASAP on the day of the show and we will use best endeavours to get clearance.

TECHNICAL SPECIFICATION: SOUND, LIGHTING & POWER FOR IN-HOUSE PRODUCTION

AUDIO SYSTEM

Main System
Martin Wavefront 8 speakers 6 W8T Mid/Top
2 W8C Mid/Top
8 W8S Sub
QSC series amplifiers 2 PLX1602
2 PLX2402
2 PLX3002
Martin Audio amplifiers 4 MA3

FRONT OF HOUSE

Midas Pro 6 console with
DL443 Line in/out card
DL441 Analogue i/p card
DL442 Analogue o/p card
DN9650 Network Bridge with MADI interface
JoeCo Black Box audio recorder with MADI interface and iPad remote control
XTA System Controllers 2 DP426 with walkabout audiocore control
BSS 901 II multi-band compressor 2
dbx 160 compressor 1
Yamaha Multi Effects 1 SPX2000
TC Delay Line 1 D-Two
CD Player 1

MONITORS

Midas Pro 6 console with DL452 AES/EBU card
2 x DL442 Analogue o/p card
DN9331 Graphic Controller
Martin Audio Biamped monitors 10 LE700A
Martin Audio Sidefill & Drumfill 3 H3T
BSS System controllers 4 FDS334
1 FDS336
QSC PLX Series Amplifiers 5 PLX2402
5 PLX1202

MICROPHONES

2 Shure Beta 91 8 Sennheiser e604 2 Shure Beta 52A
4 Sennheiser e609 4 Shure Beta 56A 2 Sennheiser MD421
1 Audix D6 1 Audix i5 2 Audix D2
1 Audix D4 4 AKG C451B 4 Shure Beta 57A
6 Shure SM58 2 AKG SE300B/CK93 4 Shure SM57
4 Shure Beta 58A
10 BSS AR133 Active DI Box
2 EMO Passive DI Box

LIGHTING SYSTEM

DJ Equipment:
2 x Pioneer CDJ 850
2 x Pioneer CDJ 1000
1 x Pioneer DJM 600
1 X Pioneer DJM 800
2 X Technics 1210 Turntables
(Promoter to supply Cartridges)

AVAILABLE POWER SUPPLIES

Lighting:

1 x 63A three-phase Ceeform









Audio:

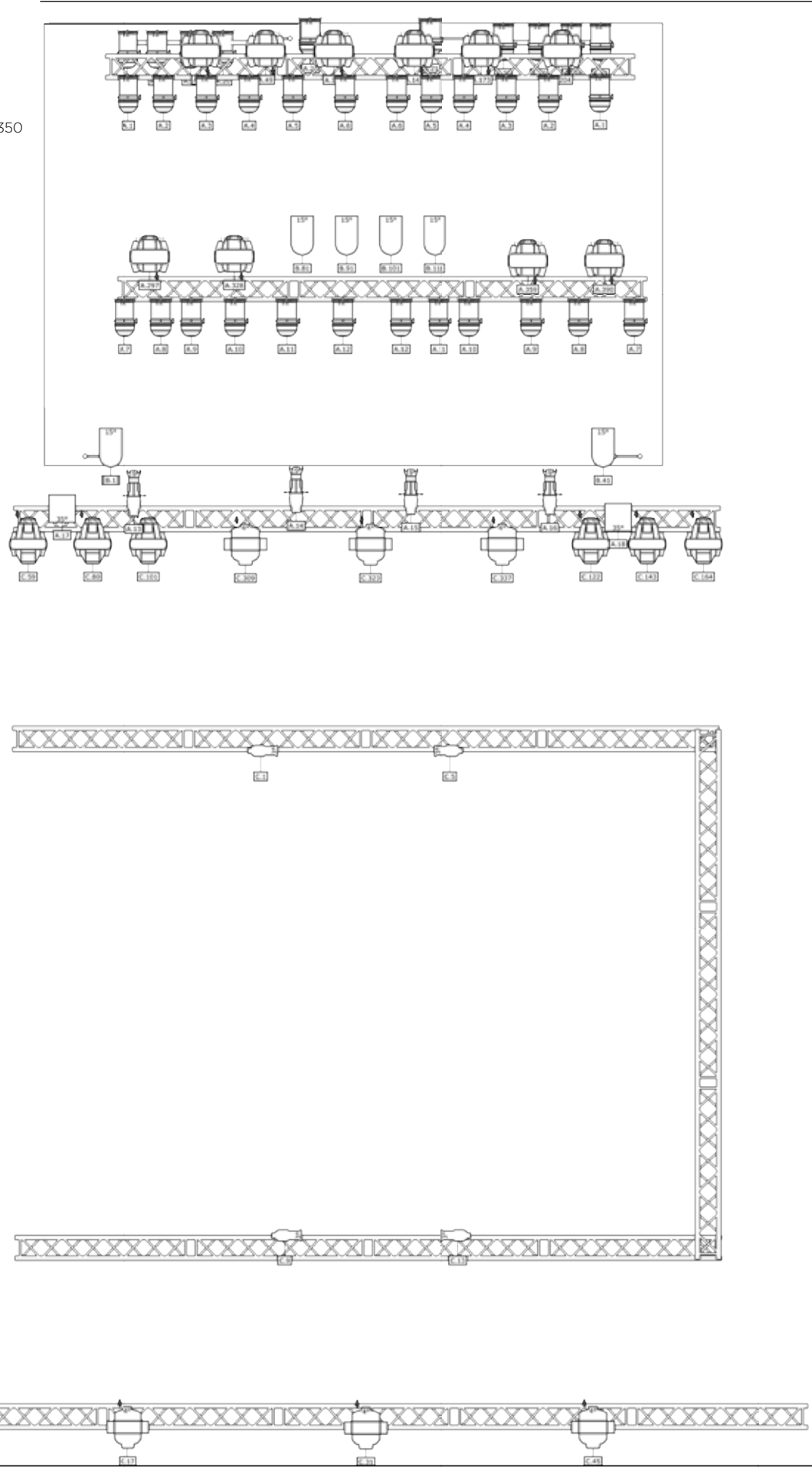
1 x 63A single-phase Ceeform
4 x 32amp ceeform and any
combination down from that

Bus Power:









1 x 16A single-phase Ceeform

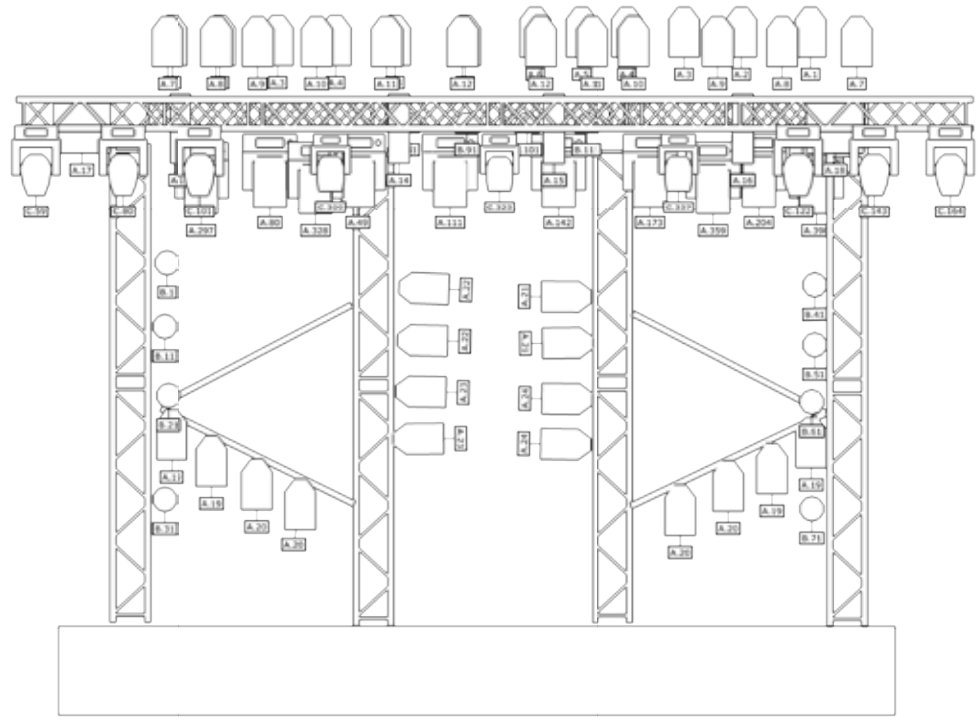
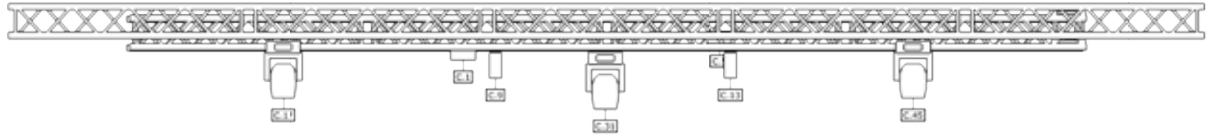
SYMBOL KEY

-  Par 64 Standard
-  Tour LED 42
-  MAC 700 Profile
-  Rogue R2 Spot
-  Intimidator Beam LED 350
-  BEAMshot
-  Source Four 19° (419)
-  Molefay 4 Cell Blinder



SYMBOL KEY

-  Par 64 Standard
-  Tour LED 42
-  MAC 700 Profile
-  Rogue R2 Spot
-  Intimidator Beam LED 350
-  BEAMshot
-  Source Four 19° (419)
-  Molefay 4 Cell Blinder



NEW FIXTURE REPORT

Project:

Drawing author:

Drawing version:

FIXTURES

Unit	Channel	Fixture	Optics	Circuit	Patch	Mode	Filters/ Gobos	Accessories
	0	James Thomas Engineering Par 64 Standard	CP80 VNSP 1kw, 12°		A.1	Control, 1 ch		
	0	James Thomas Engineering Par 64 Standard	CP80 VNSP 1kw, 12°		A.1	Control, 1 ch		
	0	James Thomas Engineering Par 64 Standard	CP80 VNSP 1kw, 12°		A.2	Control, 1 ch		
	0	James Thomas Engineering Par 64 Standard	CP80 VNSP 1kw, 12°		A.2	Control, 1 ch		
	0	James Thomas Engineering Par 64 Standard	CP80 VNSP 1kw, 12°		A.3	Control, 1 ch		
	0	James Thomas Engineering Par 64 Standard	CP80 VNSP 1kw, 12°		A.3	Control, 1 ch		
	0	James Thomas Engineering Par 64 Standard	CP80 VNSP 1kw, 12°		A.4	Control, 1 ch		
	0	James Thomas Engineering Par 64 Standard	CP80 VNSP 1kw, 12°		A.4	Control, 1 ch		
	0	James Thomas Engineering Par 64 Standard	CP80 VNSP 1kw, 12°		A.5	Control, 1 ch		
	0	James Thomas Engineering Par 64 Standard	CP80 VNSP 1kw, 12°		A.5	Control, 1 ch		

FIXTURES

Unit	Channel	Fixture	Optics	Circuit	Patch	Mode	Filters/ Gobos	Accessories
	0	James Thomas Engineering Par 64 Standard	CP80 VNSP 1kw, 12°		A.6	Control, 1 ch		
	0	James Thomas Engineering Par 64 Standard	CP80 VNSP 1kw, 12°		A.6	Control, 1 ch		
	0	James Thomas Engineering Par 64 Standard	CP80 VNSP 1kw, 12°		A.7	Control, 1 ch		
	0	James Thomas Engineering Par 64 Standard	CP80 VNSP 1kw, 12°		A.7	Control, 1 ch		
	0	James Thomas Engineering Par 64 Standard	CP80 VNSP 1kw, 12°		A.8	Control, 1 ch		
	0	James Thomas Engineering Par 64 Standard	CP80 VNSP 1kw, 12°		A.8	Control, 1 ch		
	0	James Thomas Engineering Par 64 Standard	CP80 VNSP 1kw, 12°		A.9	Control, 1 ch		
	0	James Thomas Engineering Par 64 Standard	CP80 VNSP 1kw, 12°		A.9	Control, 1 ch		
	0	James Thomas Engineering Par 64 Standard	CP80 VNSP 1kw, 12°		A.10	Control, 1 ch		
	0	James Thomas Engineering Par 64 Standard	CP80 VNSP 1kw, 12°		A.10	Control, 1 ch		
	0	James Thomas Engineering Par 64 Standard	CP80 VNSP 1kw, 12°		A.11	Control, 1 ch		

FIXTURES

Unit	Channel	Fixture	Optics	Circuit	Patch	Mode	Filters/ Gobos	Accessories
	0	James Thomas Engineering Par 64 Standard	CP80 VNSP 1kw, 12°		A.11	Control, 1 ch		
	0	James Thomas Engineering Par 64 Standard	CP80 VNSP 1kw, 12°		A.12	Control, 1 ch		
	0	James Thomas Engineering Par 64 Standard	CP80 VNSP 1kw, 12°		A.12	Control, 1 ch		
	0	ETC Source Four 19° (419)	HPL, 750/115 19°		A.13	Control, 1 ch		
	0	ETC Source Four 19° (419)	HPL, 750/115 19°		A.14	Control, 1 ch		
	0	ETC Source Four 19° (419)	HPL, 750/115 19°		A.15	Control, 1 ch		
	0	ETC Source Four 19° (419)	HPL, 750/115 19°		A.16	Control, 1 ch		
	0	James Thomas Engineering Molefay 4 Cell Blinder	CP80 VNSP 1kw, 12°		A.17	Control, 1 ch		
	0	James Thomas Engineering Molefay 4 Cell Blinder	CP80 VNSP 1kw, 12°		A.18	Control, 1 ch		
	0	James Thomas Engineering Par 64 Standard	CP80 VNSP 1kw, 12°		A.19	Control, 1 ch		
	0	James Thomas Engineering Par 64 Standard	CP80 VNSP 1kw, 12°		A.19	Control, 1 ch		

FIXTURES

Unit	Channel	Fixture	Optics	Circuit	Patch	Mode	Filters/ Gobos	Accessories
	0	James Thomas Engineering Par 64 Standard	CP80 VNSP 1kw, 12°		A.19	Control, 1 ch		
	0	James Thomas Engineering Par 64 Standard	CP80 VNSP 1kw, 12°		A.19	Control, 1 ch		
	0	James Thomas Engineering Par 64 Standard	CP80 VNSP 1kw, 12°		A.20	Control, 1 ch		
	0	James Thomas Engineering Par 64 Standard	CP80 VNSP 1kw, 12°		A.20	Control, 1 ch		
	0	James Thomas Engineering Par 64 Standard	CP80 VNSP 1kw, 12°		A.21	Control, 1 ch		
	0	James Thomas Engineering Par 64 Standard	CP80 VNSP 1kw, 12°		A.21	Control, 1 ch		
	0	James Thomas Engineering Par 64 Standard	CP80 VNSP 1kw, 12°		A.22	Control, 1 ch		
	0	James Thomas Engineering Par 64 Standard	CP80 VNSP 1kw, 12°		A.22	Control, 1 ch		
	0	James Thomas Engineering Par 64 Standard	CP80 VNSP 1kw, 12°		A.23	Control, 1 ch		
	0	James Thomas Engineering Par 64 Standard	CP80 VNSP 1kw, 12°		A.23	Control, 1 ch		
	0	James Thomas Engineering Par 64 Standard	CP80 VNSP 1kw, 12°		A.24	Control, 1 ch		

FIXTURES

Unit	Channel	Fixture	Optics	Circuit	Patch	Mode	Filters/ Gobos	Accessories
	0	James Thomas Engineering Par 64 Standard	CP80 VNSP 1kw, 12°		A.24	Control, 1 ch		
	0	Martin MAC 700 Profile	Standard Lens 16° -30°		A.49	Basic mode 23 chs		
	0	Martin MAC 700 Profile	Standard Lens 16° -30°		A.80	Basic mode 23 chs		
	0	Martin MAC 700 Profile	Standard Lens 16° -30°		A.111	Basic mode 23 chs		
	0	Martin MAC 700 Profile	Standard Lens 16° -30°		A.142	Basic mode 23 chs		
	0	Martin MAC 700 Profile	Standard Lens 16° -30°		A.173	Basic mode 23 chs		
	0	Martin MAC 700 Profile	Standard Lens 16° -30°		A.204	Basic mode 23 chs		
	0	Martin MAC 700 Profile	Standard Lens 16° -30°		A.297	Basic mode 23 chs		
	0	Martin MAC 700 Profile	Standard Lens 16° -30°		A.328	Basic mode 23 chs		
	0	Martin MAC 700 Profile	Standard Lens 16° -30°		A.359	Basic mode 23 chs		
	0	Martin MAC 700 Profile	Standard Lens 16° -30°		A.390	Basic mode 23 chs		

FIXTURES

Unit	Channel	Fixture	Optics	Circuit	Patch	Mode	Filters/ Gobos	Accessories
	0	Expolite TourLED 42	Standard Lens 15°		B.1	TOUR mode, 10 chs		
	0	Expolite TourLED 42	Standard Lens 15°		B.11	TOUR mode, 10 chs		
	0	Expolite TourLED 42	Standard Lens 15°		B.21	TOUR mode, 10 chs		
	0	Expolite TourLED 42	Standard Lens 15°		B.31	TOUR mode, 10 chs		
	0	Expolite TourLED 42	Standard Lens 15°		B.41	TOUR mode, 10 chs		
	0	Expolite TourLED 42	Standard Lens 15°		B.51	TOUR mode, 10 chs		
	0	Expolite TourLED 42	Standard Lens 15°		B.61	TOUR mode, 10 chs		
	0	Expolite TourLED 42	Standard Lens 15°		B.71	TOUR mode, 10 chs		
	0	Expolite TourLED 42	Standard Lens 15°		B.81	TOUR mode, 10 chs		
	0	Expolite TourLED 42	Standard Lens 15°		B.91	TOUR mode, 10 chs		
	0	Expolite TourLED 42	Standard Lens 15°		B.101	TOUR mode, 10 chs		

FIXTURES

Unit	Channel	Fixture	Optics	Circuit	Patch	Mode	Filters/ Gobos	Accessories
	0	Expolite TourLED 42	Standard Lens 16.5°		B.111	TOUR mode, 10 chs		
	0	Chauvet BEAMshot	Standard Lens 3°		C.1	4 channel mode 4 chs		
	0	Chauvet BEAMshot	Standard Lens 3°		C.5	4 channel mode 4 chs		
	0	Chauvet BEAMshot	Standard Lens 3°		C.9	4 channel mode 4 chs		
	0	Chauvet BEAMshot	Standard Lens 3°		C.13	4 channel mode 4 chs		
	0	Chauvet Intimidator Beam LED 350	Standard Lens 4°		C.17	BASIC mode, 8 chs		
	0	Chauvet Intimidator Beam LED 350	Standard Lens 4°		C.31	BASIC mode, 8 chs		
	0	Chauvet Intimidator Beam LED 350	Standard Lens 4°		C.45	BASIC mode, 8 chs		
	0	Chauvet Rogue R2 Spot	Standard Lens 16.5°		C.59	21 Channel Mode, 21 chs		
	0	Chauvet Rogue R2 Spot	Standard Lens 16.5°		C.80	21 Channel Mode, 21 chs		
	0	Chauvet Rogue R2 Spot	Standard Lens 16.5°		C.101	21 Channel Mode, 21 chs		

FIXTURES

Unit	Channel	Fixture	Optics	Circuit	Patch	Mode	Filters/ Gobos	Accessories
	0	Chauvet Rogue R2 Spot	Standard Lens 16.5°		C.122	21 Channel Mode, 21 chs		
	0	Chauvet Rogue R2 Spot	Standard Lens 16.5°		C.143	21 Channel Mode, 21 chs		
	0	Chauvet Rogue R2 Spot	Standard Lens 15°		C.164	21 Channel Mode, 21 chs		
	0	Chauvet Intimidator Beam LED 350	Standard Lens 4°		C.309	BASIC mode, 8 chs		
	0	Chauvet Intimidator Beam LED 350	Standard Lens 4°		C.323	BASIC mode, 8 chs		
	0	Chauvet Intimidator Beam LED 350	Standard Lens 4°		C.337	BASIC mode, 8 chs		