

980 N

480 E

500 E

520 E

540 E

980 N

Issue	Description	Date

Abbrev.

AB	alarm bell	H	cill to head height
BGP	brick glass point	IC	inspection cover
BK	brick	LP	lamp post
BT	british telecom	MH	manhole
C	floor to cill height	RS	road sign
CONC.	concrete	RSJ	rolled steel joist
C/B	close board	RSS	rolled steel stantion
C/L	chain link	RWP	rain water pipe
CL	ceiling level	SV	stop valve
DK	drop kerb	TBM	temporary bench mark
DH	door height	V	vent
FH	fire hydrant	VP	vent pipe
FHR	fire hose reel	WP	waste pipe
FC	false ceiling	WHB	wash hand basin
FL	floor level	WM	water meter
GV	gas valve	WSC	water stop cock

Levels

All levels are in metres and are related to an arbitrary value of station 1 a nail situated on far pavement of Kentish Town Road opposite Electric Ballroom yard

Value 50.000m

Level positions are indicated by either a cross or by the decimal point.

Drainage

CL cover level
 IL invert level
 NVC no visible connection
 UTL unable to lift

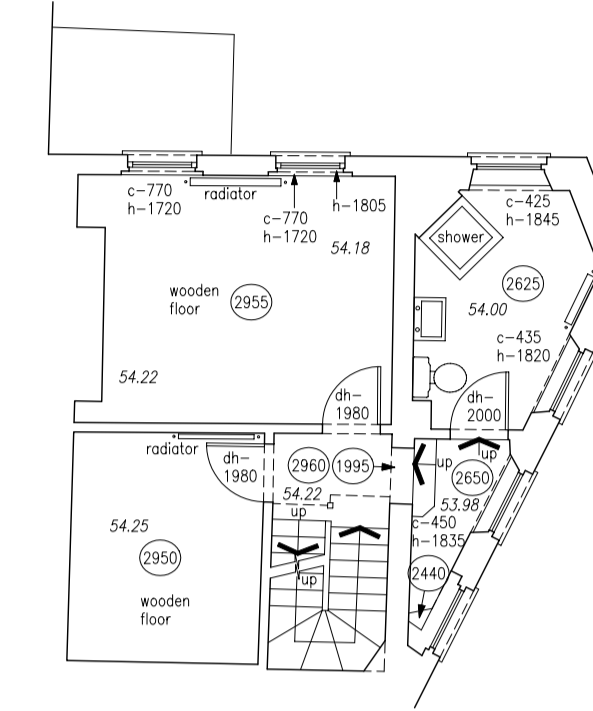
— — — — — foul water run
 — — — — — storm water run

all drainage should be checked on site before using information

Trees

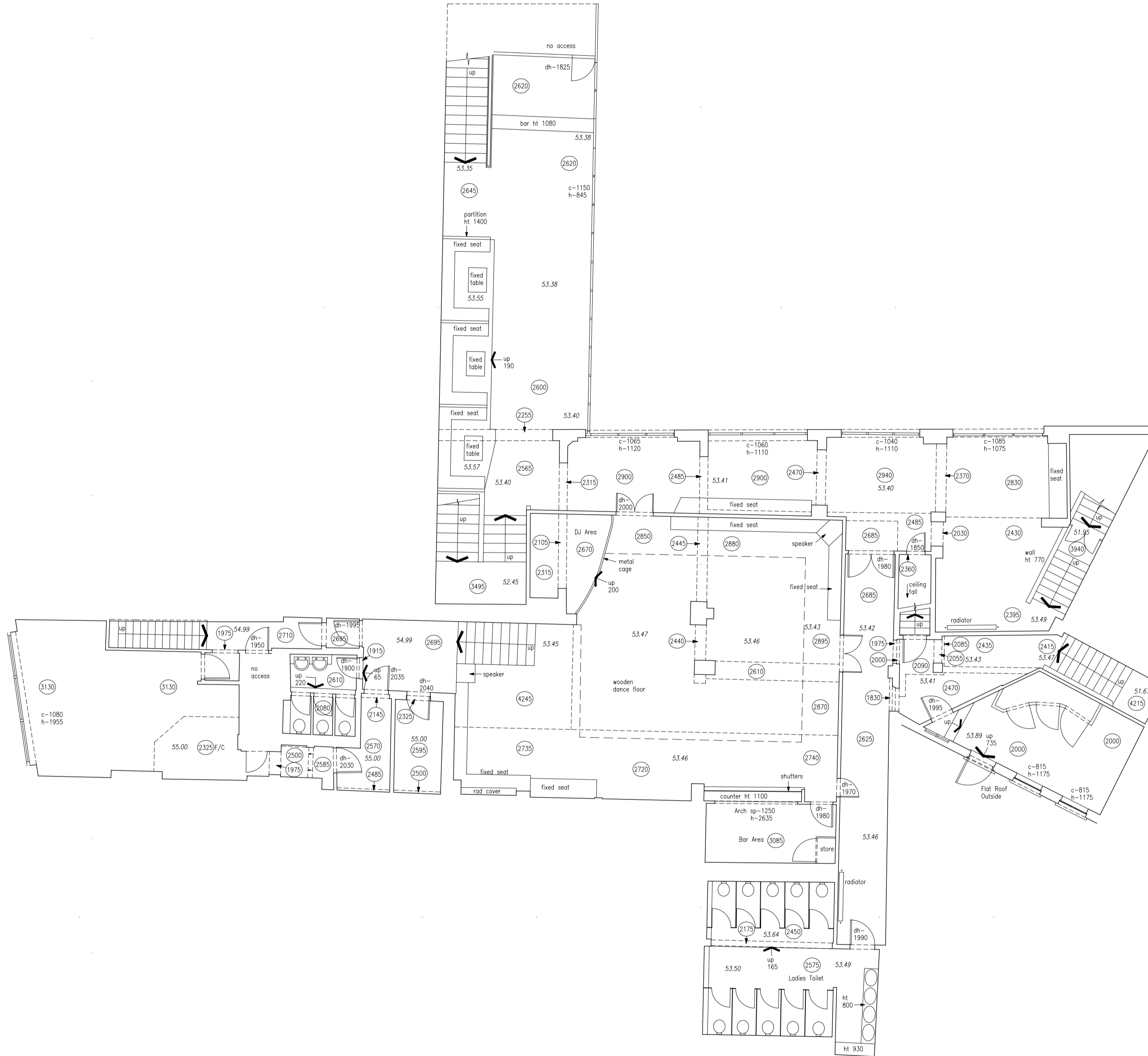
Ø OF TRUNK / HEIGHT / SPREAD

all tree sizes approx. and should be checked on site before using information



960 N

960 N



940 N

940 N

480 E

500 E

520 E

540 E



Cadplan Land & Building Surveyors
 18-20 Greatness Road, Sevenoaks, Kent TN14 5BY
 Tel : 01732 469100 Fax : 01732 469101
 E-mail : post@cadplan.co.uk Web : www.cadplan.co.uk

Client

Kate Fuller

Project

**Electric Ballroom
 182 Camden High Street
 London NW1 8QP**

Title

First Floor Plan

<i>Drawn by</i>	M.R.H	<i>Checked by</i>	G.J.E.
-----------------	--------------	-------------------	---------------

<i>Scale</i>	1:100@A1	<i>Date</i>	Sept 11
--------------	-----------------	-------------	----------------

Project no.	Dwg. no.	Revision	Prelim.
5917	02		